



MILADO

Art Gallery

Gleb Skubachevsky

b.1989, Moscow, Russia

ABOUT

Gleb Skubachevsky

Born in Moscow in 1989, Gleb Skubachevsky explores different forms of life, both on Earth and beyond, constructing a personal “research laboratory” where he is at once microcosmic investigator, philosopher, and traveler. His work transforms scientific observation into meditative experience, balancing meticulous craftsmanship with bold, expressive techniques. The celebrated *Alien Creatures* series reimagines extraterrestrial beings through rolled paper “whiskers,” while his *Covid-19* works draw on electron microscope imagery to challenge perceptions of microbes as purely destructive forces. Fear, curiosity, and wonder fuel his process, producing works that oscillate between playfulness and unease, leading viewers into aesthetic swings between beauty and horror. Now based at London’s Bow Arts Studios, Skubachevsky continues to expand across 2D and 3D forms, from graphics to sculpture, while pursuing sustainable practices and eco-materials in his search for new artistic frontiers.

EDUCATION

2010-2016 Moscow State Academic Art Institute
named after V.N. Surikov, Moscow, Russia
2005-2010 Moscow State Academic Art College in
Memory of 1905, Moscow, Russia

SELECTED SOLO EXHIBITIONS

2025 *Pulchritudo Mortifera*, St Margaret’s House,
London, United Kingdom
2021 *Elusive Worlds*, Askeri Gallery, Moscow, Russia
2020 *Genesis*, Askeri Gallery, Moscow, Russia
2019 *In Regeneration*, Askeri Gallery, Moscow, Russia
2018 *Anima Aliena*, Askeri Gallery, Moscow, Russia
2017 *Itaparisaurs*, Residence Sacatar, Itaparica, Brazil
2016 *Circulation*, 11.12 Gallery, Moscow, Russia
2015 *Spiritum Ubivult Spirat*, Dukley European Art
Community, Kotor, Montenegro

SELECTED GROUP EXHIBITIONS

2025 *Sense and Sensuality*, Milado Art Gallery,
London, United Kingdom
2021 *New Era: P li*, (Virtual Exhibition), London,
United Kingdom
2019 *Artist Collaboration*, Galeriecampl, Munich,
Germany
2019 *Birth Cabianca Siena*, Siena, Italy
2019 *Slovovno Forum*, Dukley, Montenegro





ATLAS SERIES

For the solo presentation at the Platform section of the London Art Fair 2026, curated by an art historian and author Dr Ferren Gipson, Gleb Skubachevsky presents Atlas series. It emerged in 2025 following reports and scientific discussions surrounding an interstellar object detected by the ATLAS survey. The event sparked widespread cultural and scientific speculation, creating an atmosphere of uncertainty and the unknown that captured the artist's imagination.

Skubachevsky reflects on rare cosmic alignments and fleeting astronomical phenomena, employing them as metaphors for humanity's enduring search for life beyond Earth and the limits of human perception. In his works, Skubachevsky challenges spatial perception through meticulously constructed three-dimensional compositions.

For more than a decade, Skubachevsky has explored living forms that exist between the scientific paradigm and imagination. In Atlas series the artist continues his renowned mixed-media technique, developed in 2015, combining paper, glue, and acrylic on canvas. Texture and colour are applied first, followed by paper elements that generate waves of dynamic movement, echoing living organisms. This paper-centric approach reinforces the project's conceptual tension between fragility and strength, the minuscule and the vast, offering an introspective reflection on humanity's place within the universe. Here, in Atlas series, reality and imagination intertwine, becoming equally significant and expansive.



***Elementum principale
(Panel I, Diptych), 2026***

Unframed: 150 x 120 cm
Paper and acrylic on canvas

£7,500.00



***Elementum principale
(Panel II, Diptych), 2026***

Unframed: 150 x 120 cm
Paper and acrylic on canvas

£7,500.00



MILADO
Art Gallery

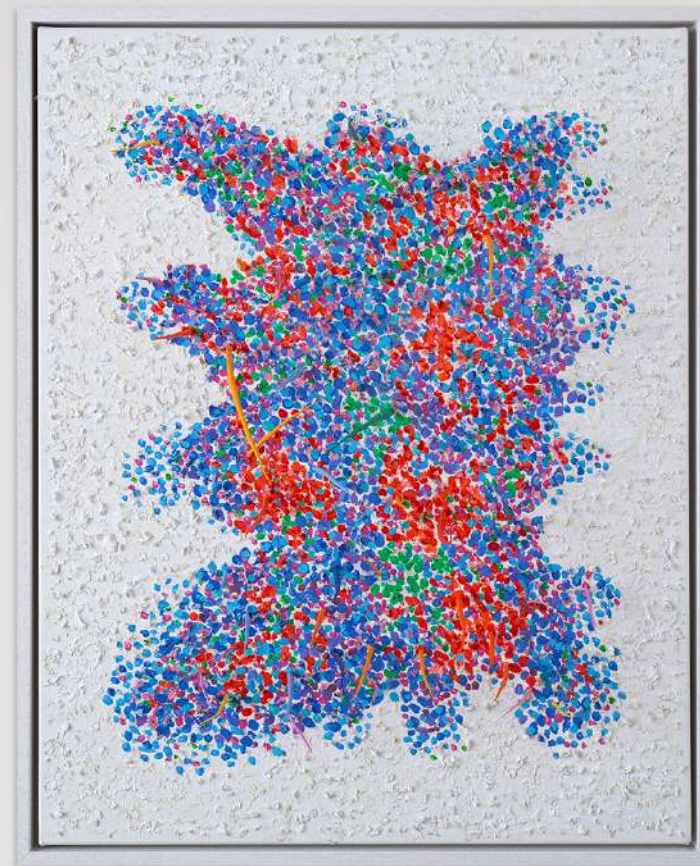


Forma vitae 1, 2026

Framed: 80 x 60 cm

Paper and acrylic on canvas

£4,000.00

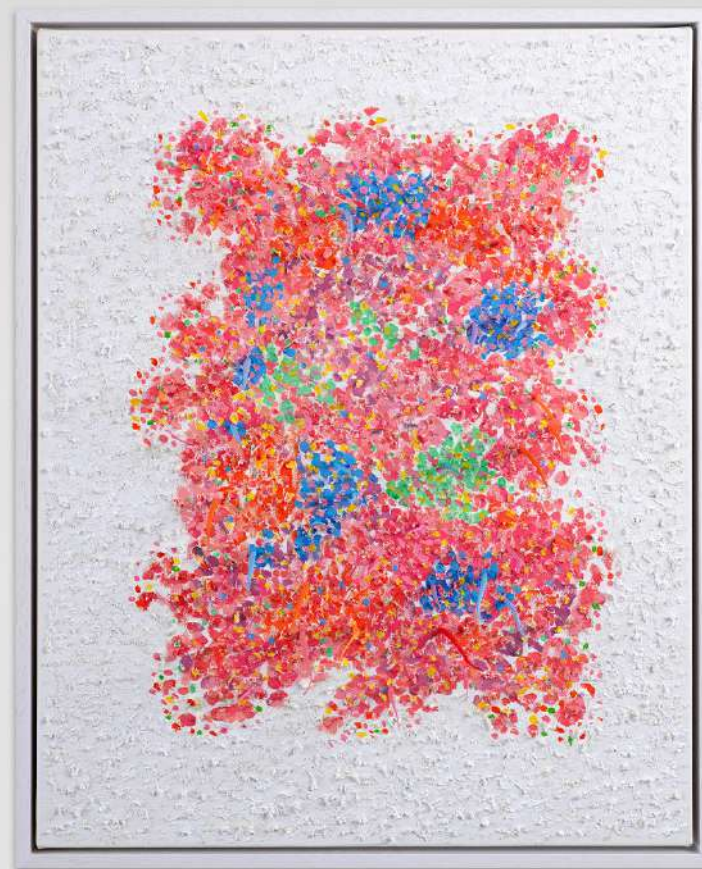


Forma vitae 2, 2026

Framed: 80 x 60 cm

Paper and acrylic on canvas

£4,000.00

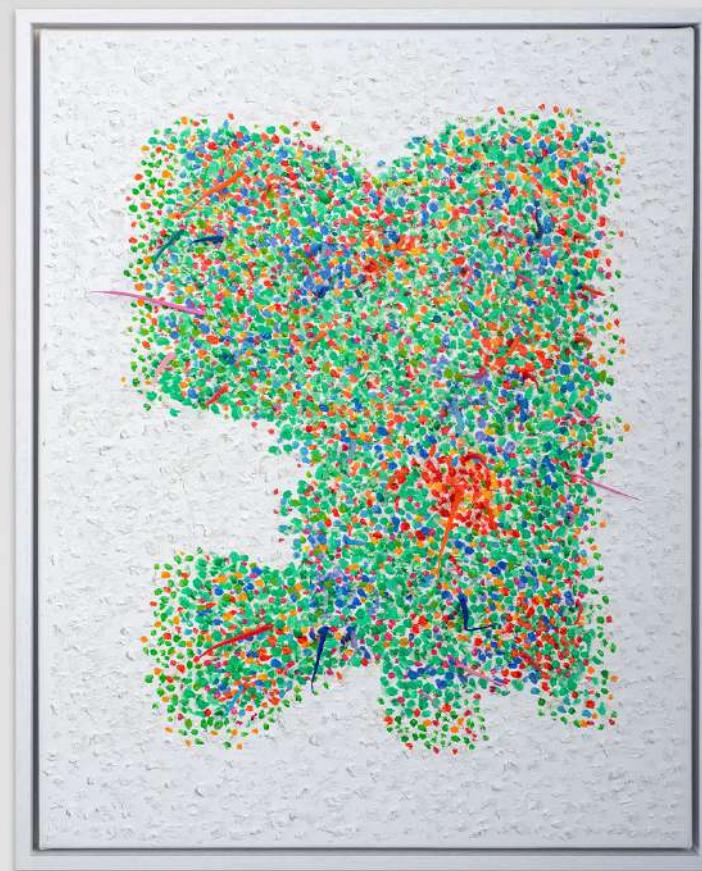


Forma vitae 3, 2026

Framed: 80 x 60 cm

Paper and acrylic on canvas

£4,000.00





MILADO
Abstract
2023



MILADO
Abstract
2023



MILADO
Abstract
2023



MILADO
Abstract
2023

Elementa vitae 1, 2026

Framed: 40 x 40 cm

Paper and acrylic on canvas

£2,500.00



Elementa vitae 2, 2026

Framed: 40 x 40 cm

Paper and acrylic on canvas

£2,500.00



Elementa vitae 3, 2026

Framed: 40 x 40 cm

Paper and acrylic on canvas

£2,500.00



Elementa vitae 4, 2026

Framed: 40 x 40 cm

Paper and acrylic on canvas

£2,500.00



MILADO
Art Gallery





ALIEN CREATURES SERIES

The *Alien Creatures* series is a renowned body of work that has developed over nearly a decade. It started with Gleb Skubachevsky's participation in Marat Guelman's art residency in Montenegro, where the enigmatic underwater life forms of the Adriatic Sea served as a central source of inspiration. Over the years, the series has gained significant international recognition. Rolled paper "whiskers" erupt from the surface, evoking both microscopic organisms and imagined inhabitants of distant planets. These forms carry a sense of detachment and self-containment, reflecting the artist's fascination with the unknown and exploration of spatial infinity. For Skubachevsky, the series is a way of delving into inner depths and seeking answers within.



Plant, 2025

Acrylic, paper, canvas

25 x 25 cm

£500.00

SOLD



Purple, 2024

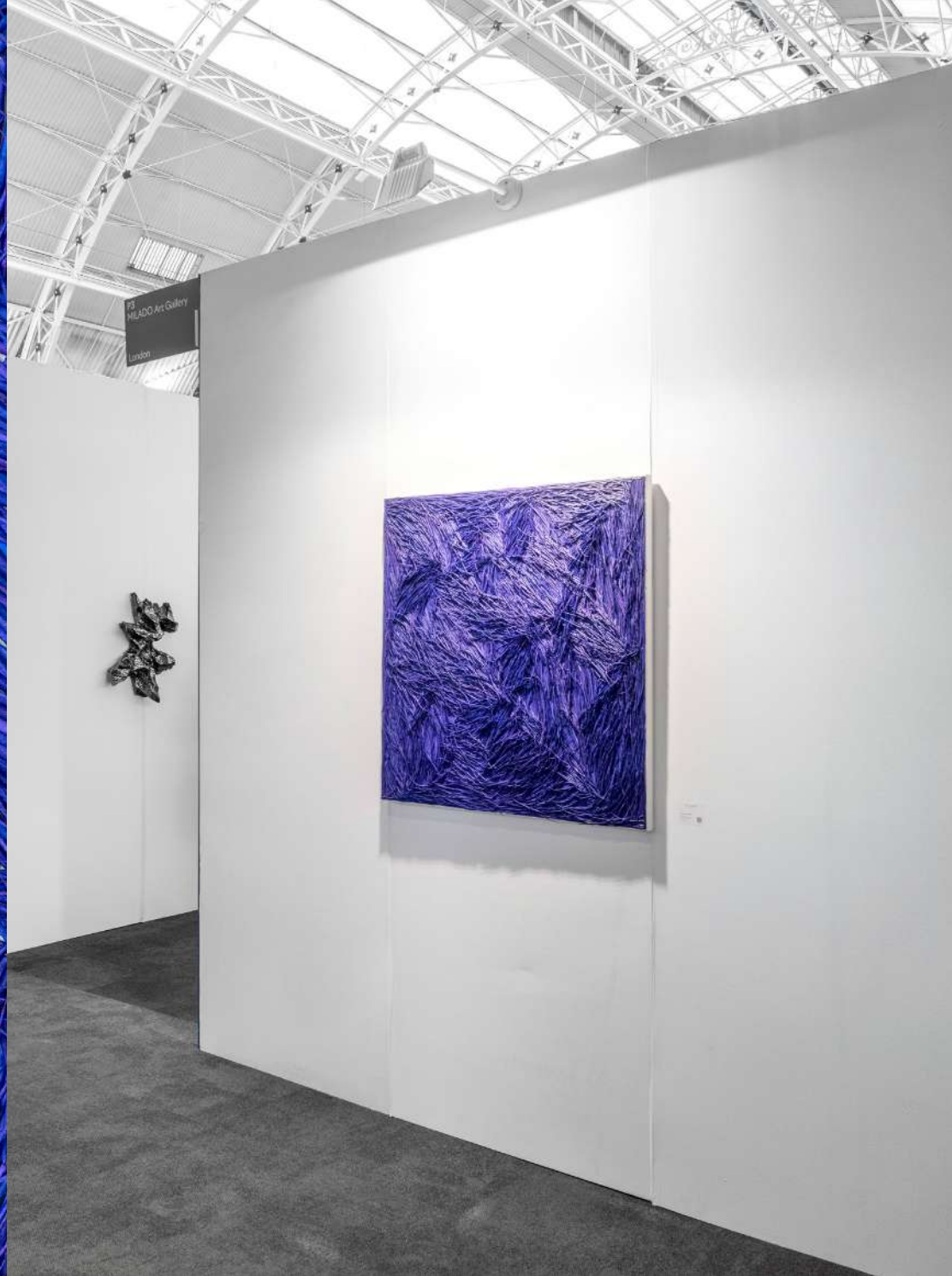
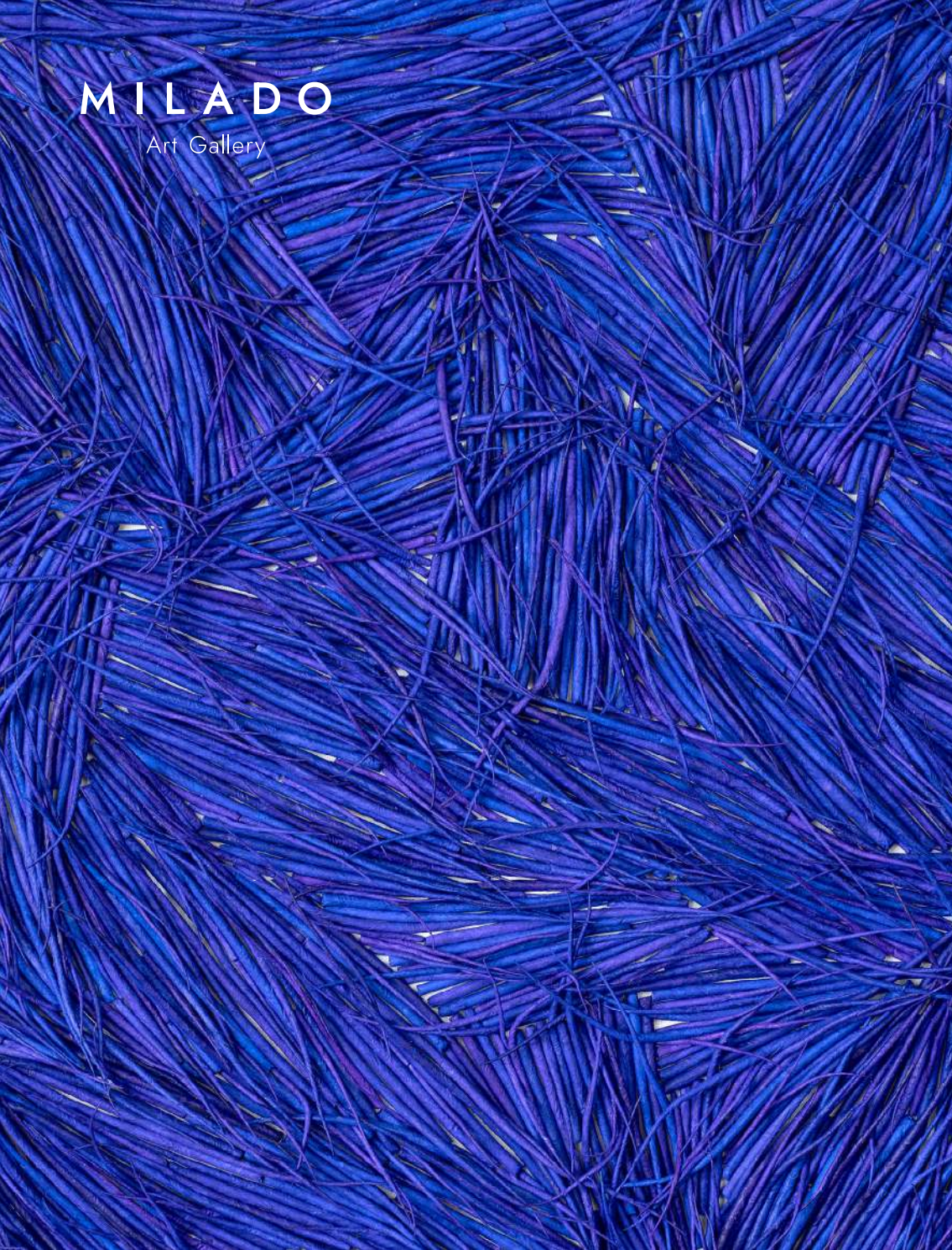
Paper, canvas, acrylic
100 x 100 cm

£9,900.00

[Press to buy / enquire](#)



MILADO
Art Gallery



Alien Creature, 8, 2024

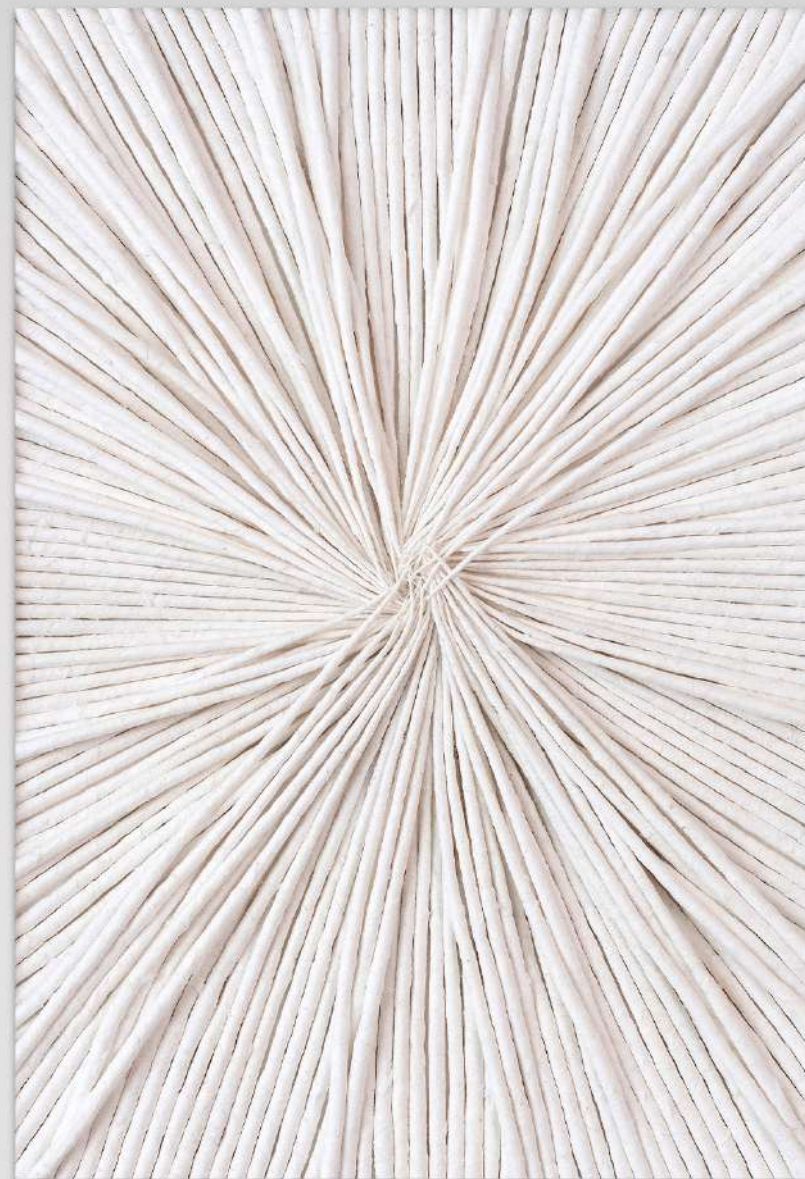
Acrylic, paper on paper

Unframed: 31 x 23 cm

Framed: 40 x 30 cm

£715.00

[Press to buy / enquire](#)



Alien Creature, 9, 2024

Acrylic, paper on paper

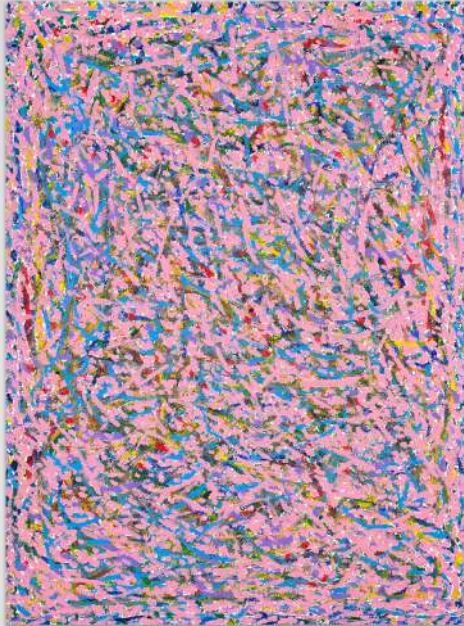
Unframed: 31 x 23 cm

Framed: 40 x 30 cm

£715.00

[Press to buy / enquire](#)





MAP OF THE UNIVERSE SERIES

The *Map of the Universe* is a series of vibrant graphics created by Gleb Skubachevsky in 2024, shortly after his move to London. Inspired by the infinite and enigmatic cosmos, the works emerge from a process of abstract experimentation that combines bold brushstrokes with meticulously selected accents. As Gleb notes: *"Sometimes I'll spend an hour making only five strokes, inching forward like in Pan's Labyrinth. I circle the work, studying it the way a tiger tamer gauges the animal's next move."*

Map of the Universe, 2, 2024

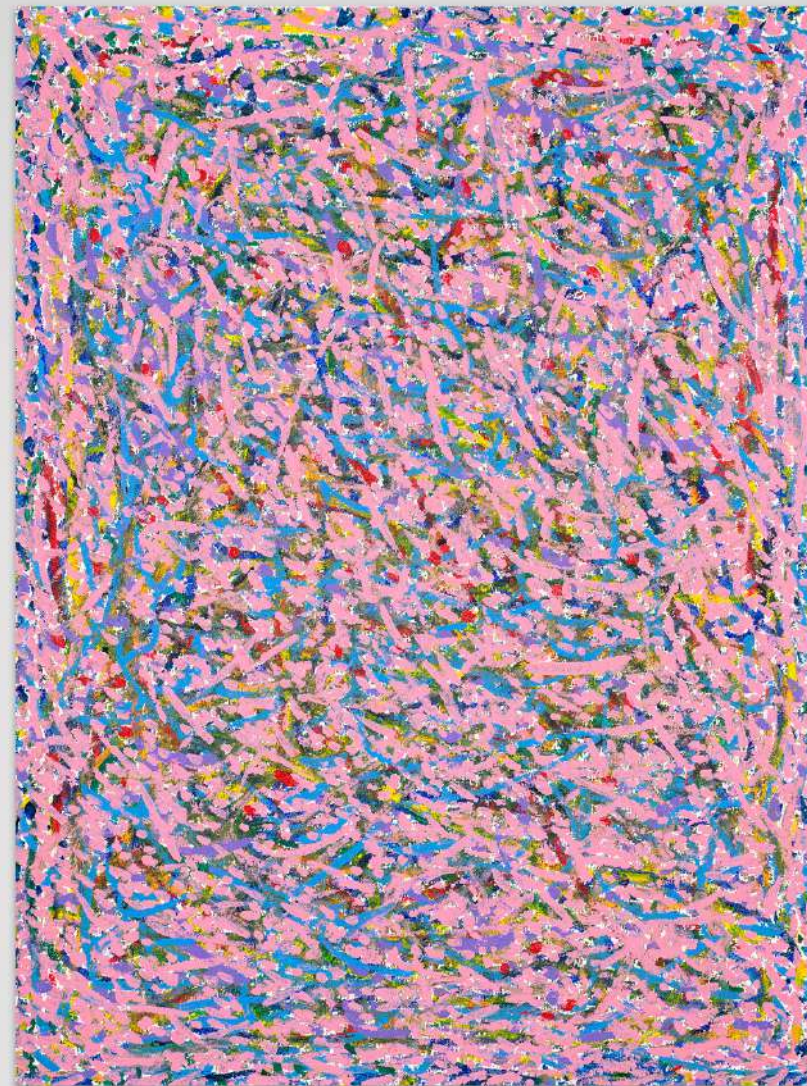
Acrylic on Paper

Unframed: 76 x 56 cm

Framed: 80 x 60 cm

£1000.00

[Press to buy / enquire](#)





In Conversation with Gelb Skubachevsky on the Map of the Universe Graphics Series

"Where do we live? What is happening to us? These are the questions that fascinate me most deeply. I once read that the Max Planck Institute produced the most extensive and precise image of the universe ever created. On those maps, the universe appears as a geoid - an oval shape. Map of the Universe is my attempt to capture a fragment of such a map, a way of engaging with and trying to decipher the mystical theories of the cosmos. Before moving to England, I had never worked with graphics. But in London, I encountered an incredible variety of them at art fairs, galleries, and exhibitions. In Russia, you hardly see this - almost no one works in graphics; most artists use large canvases. What fascinated me about graphics was the speed, and it also allows me to experiment with textures, colours, and combinations, enabling me to create entire series very quickly."

Map of the Universe, 3, 2024

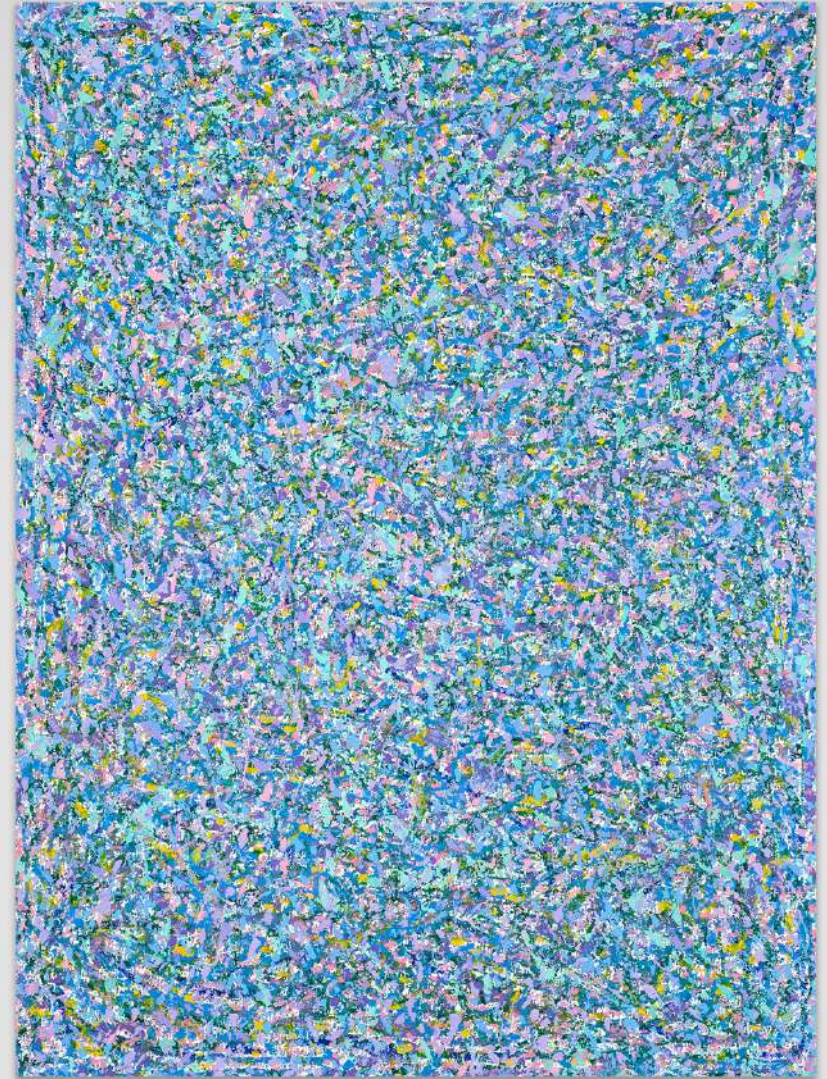
Acrylic on Paper

Unframed: 76 x 56 cm

Framed: 80 x 60 cm

£1000.00

[Press to buy / enquire](#)



Map of the Universe, 1, 2024

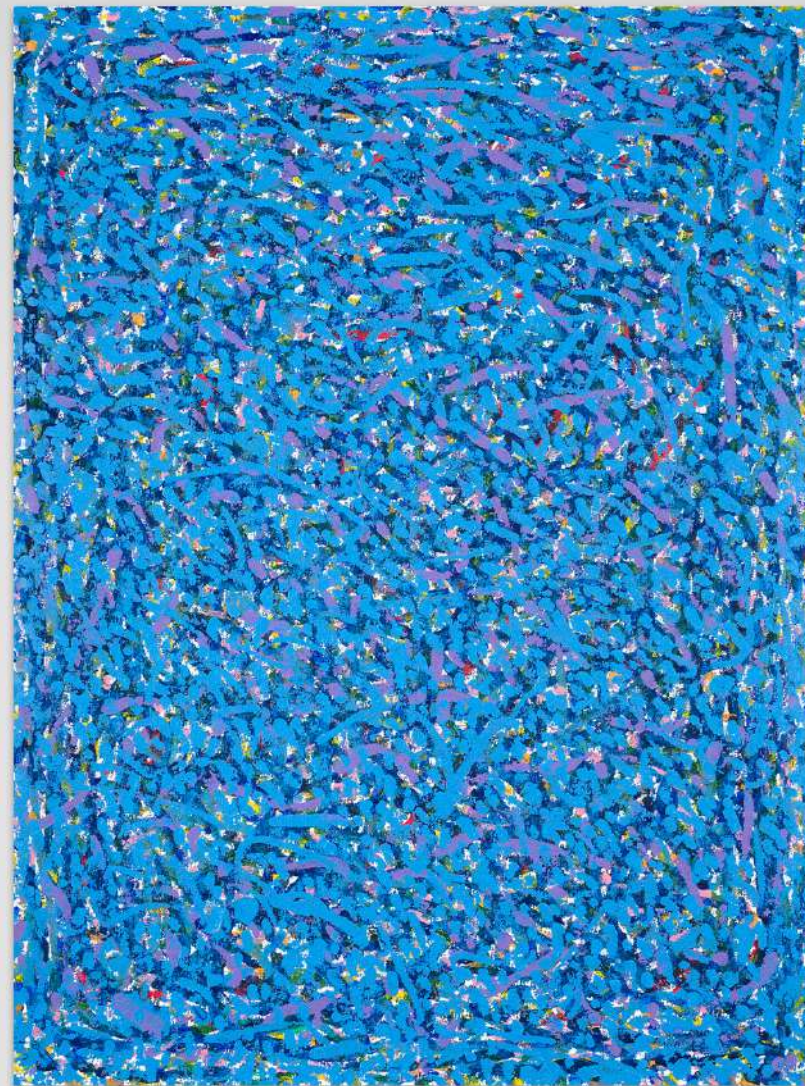
Acrylic on Paper

Unframed: 76 x 56 cm

Framed: 80 x 60 cm

£1000.00

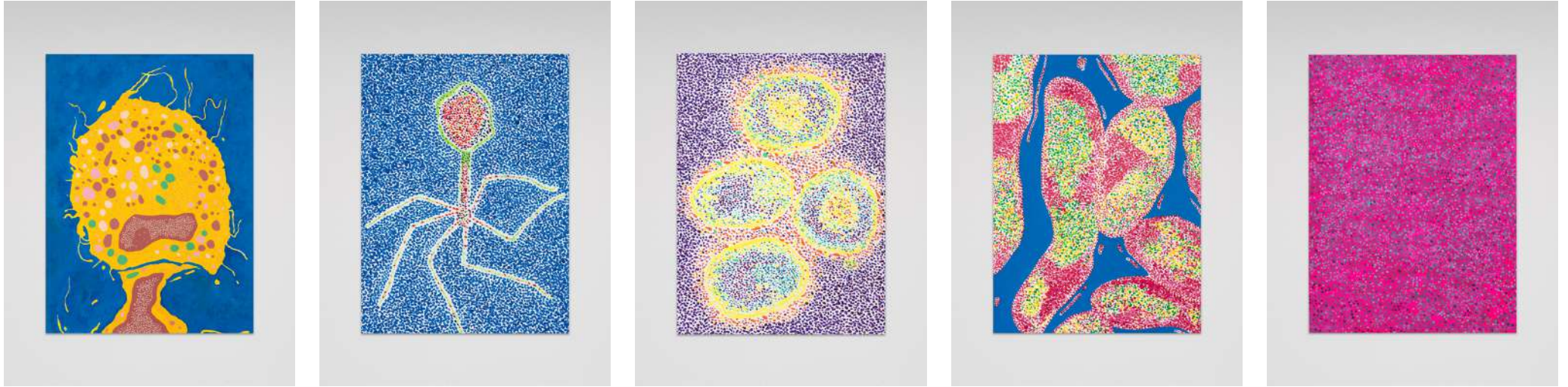
SOLD





MILADO

Art Gallery



COVID-19 SERIES

In the *Covid-19 series*, Gleb Skubachevsky reflects on the post-pandemic world and challenges the prevailing perception of viruses as monstrous creatures. Instead, the artist approaches them from another angle, disarming their threat through color and reframing them within a life-affirming, invigorating visual language. Drawing on the pointillist technique inspired by the Impressionists, Skubachevsky mimics the granular quality of imagery produced under extreme microscopic magnification, translating the invisible into a vibrant imagery. Gleb Skubachevsky reveals: *"I wanted to show humanity's most terrifying diseases in an aesthetically beautiful way. I took the diseases' side, tried to "listen" to how they feel."*

Macrophage cell, 2025

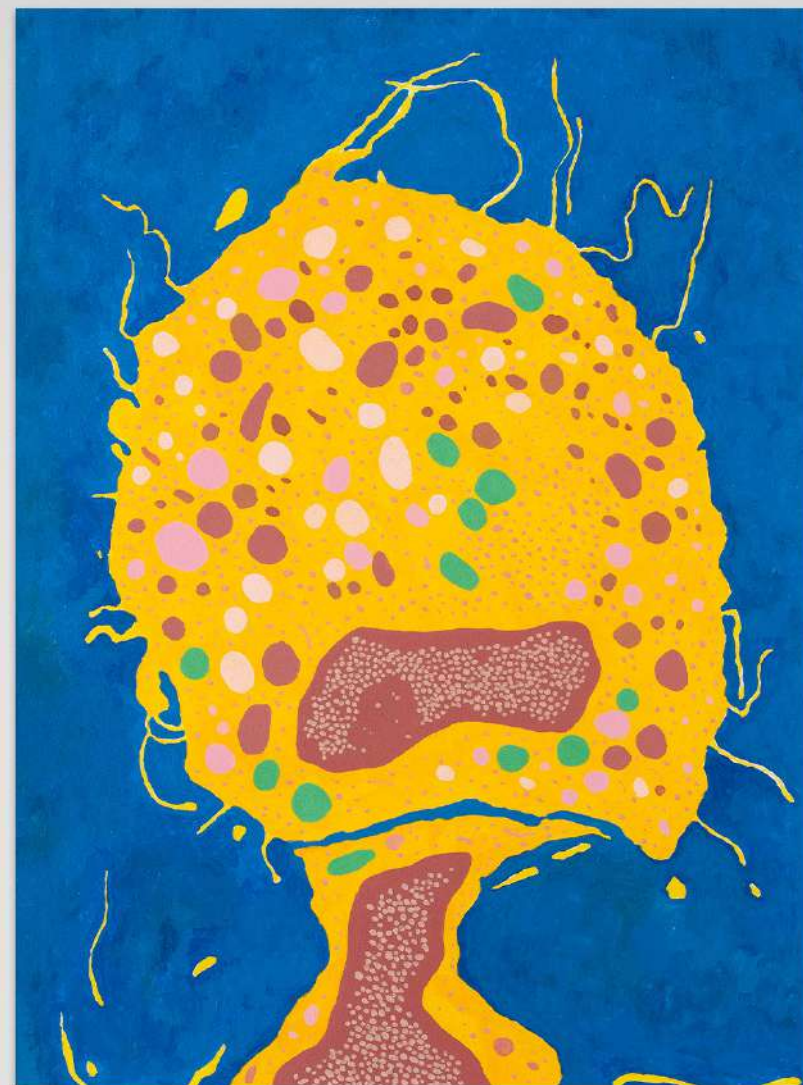
Acrylic on paper

Unframed: 42 x 30 cm

Framed: 52 x 42 cm

£385.00

SOLD



Bacteriophage, 2025

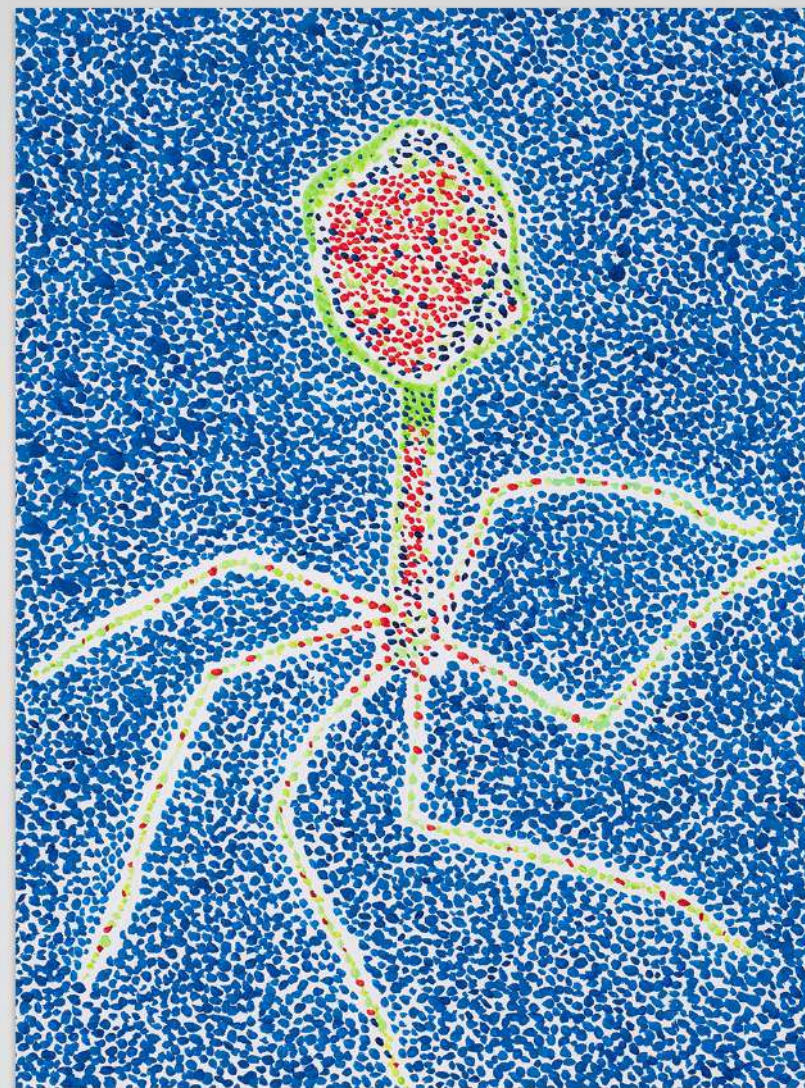
Acrylic on paper

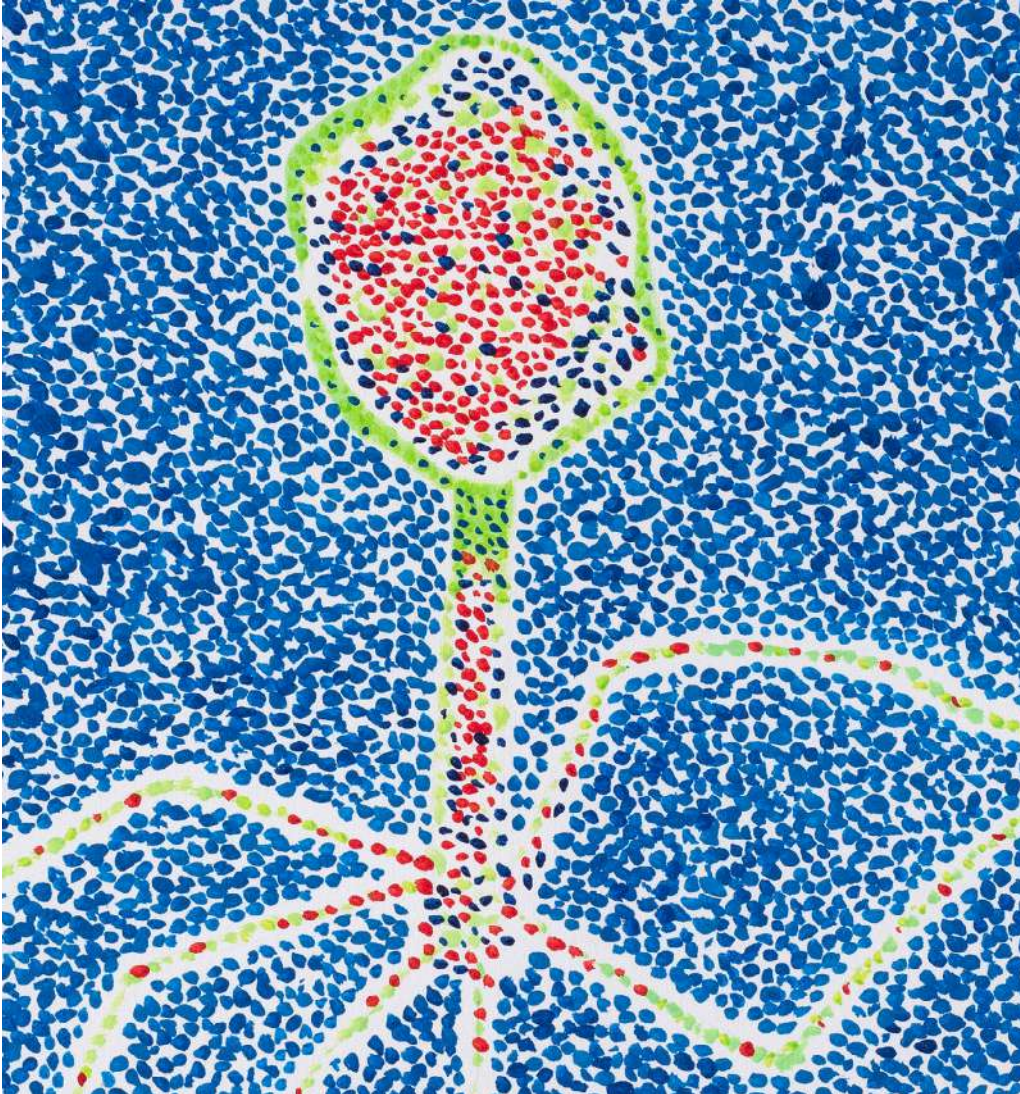
Unframed: 42 x 30 cm

Framed: 52 x 42 cm

£385.00

SOLD





In Conversation with Gelb Skubachevsky on Aliens, Covid-19 Series and Creative Process

"For me aliens are the simplest, most microscopic forms of life, for example, viruses. The wife of a photographer I know investigates bacteriophages, and she showed me actual electron microscope images. They looked almost comical, like tiny spiders. One of them even appears in my recent Covid-19 series (Bacteriophage, 2025). To me, it is a kind of positive hero, fighting against the "bad characters". It fascinates me because we cannot see this microbial world, but that doesn't mean it isn't there. It's everywhere, and that in itself is extraordinary. Like a scientist, I try to study these questions from different angles: through the cosmos, through the microscope. In fact, my whole family are physicists and chemists; perhaps that's where this scientific approach comes from. I even considered reaching out to research institutes, asking for materials, and collaborating in a laboratory setting."

Flu, 2025

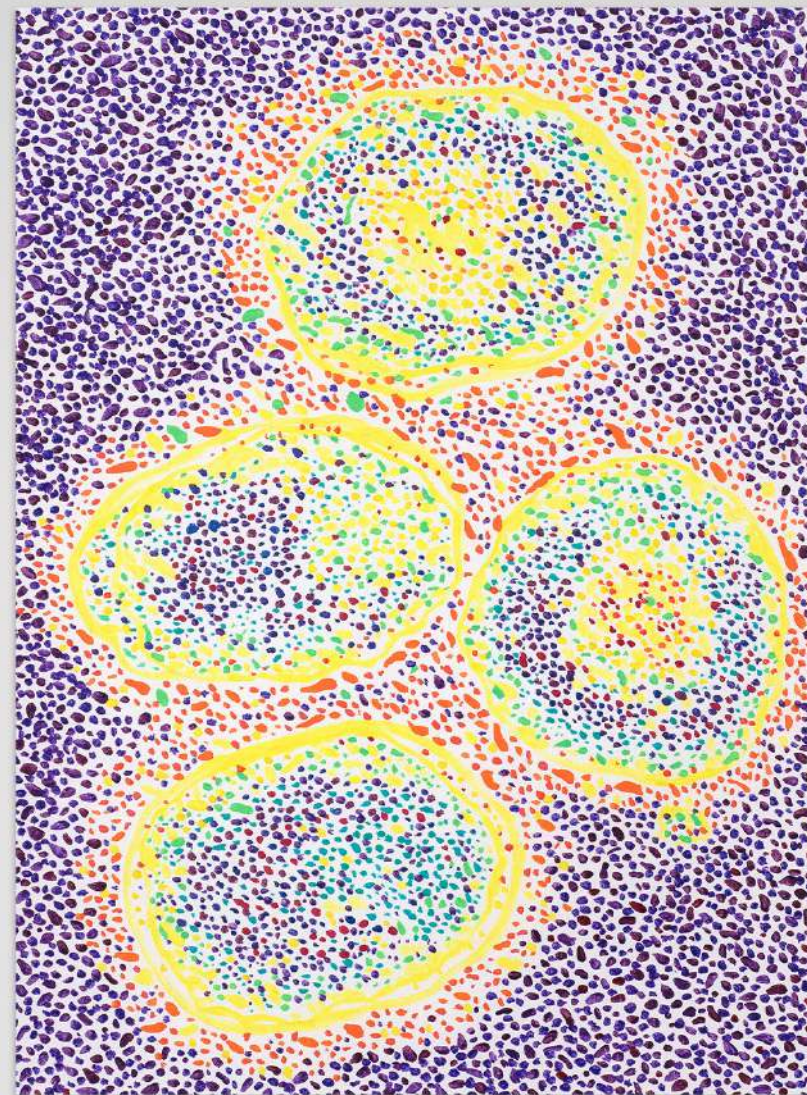
Acrylic on paper

Unframed: 42 x 30 cm

Framed: 52 x 42 cm

£385.00

[Press to buy / enquire](#)



Bacteria, 2025

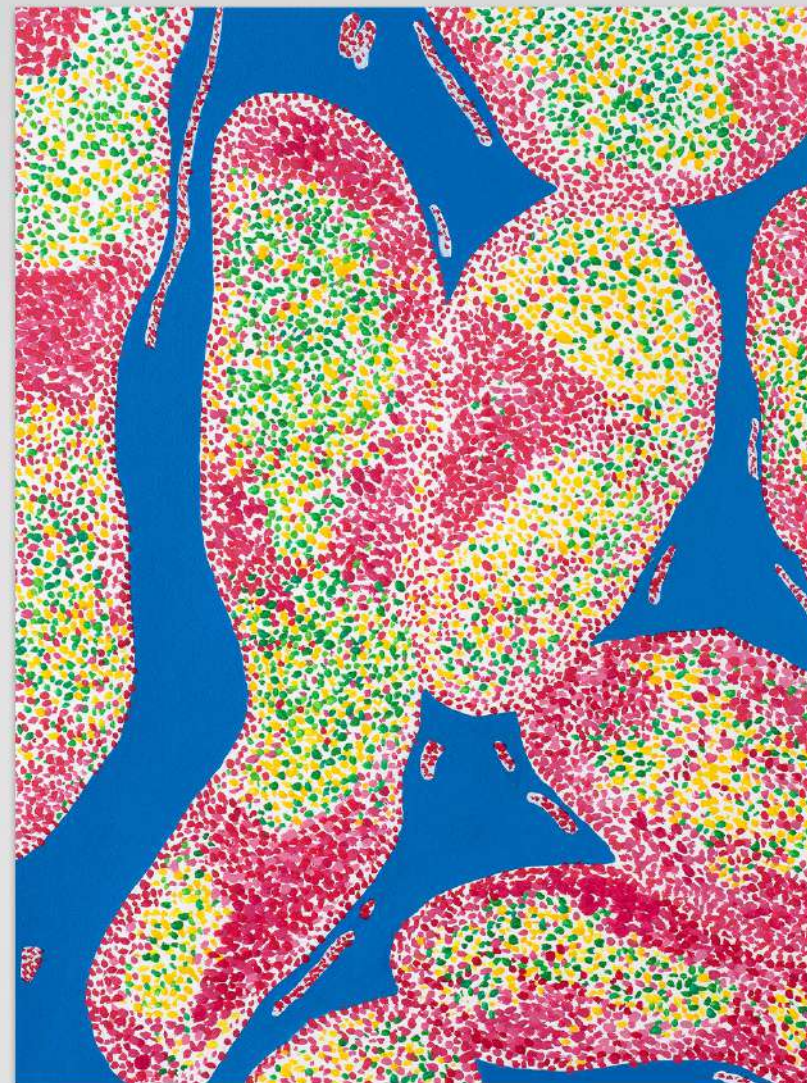
Acrylic on paper

Unframed: 42 x 30 cm

Framed: 52 x 42 cm

£385.00

SOLD



MILADO
Art Gallery



British Covid, 2025

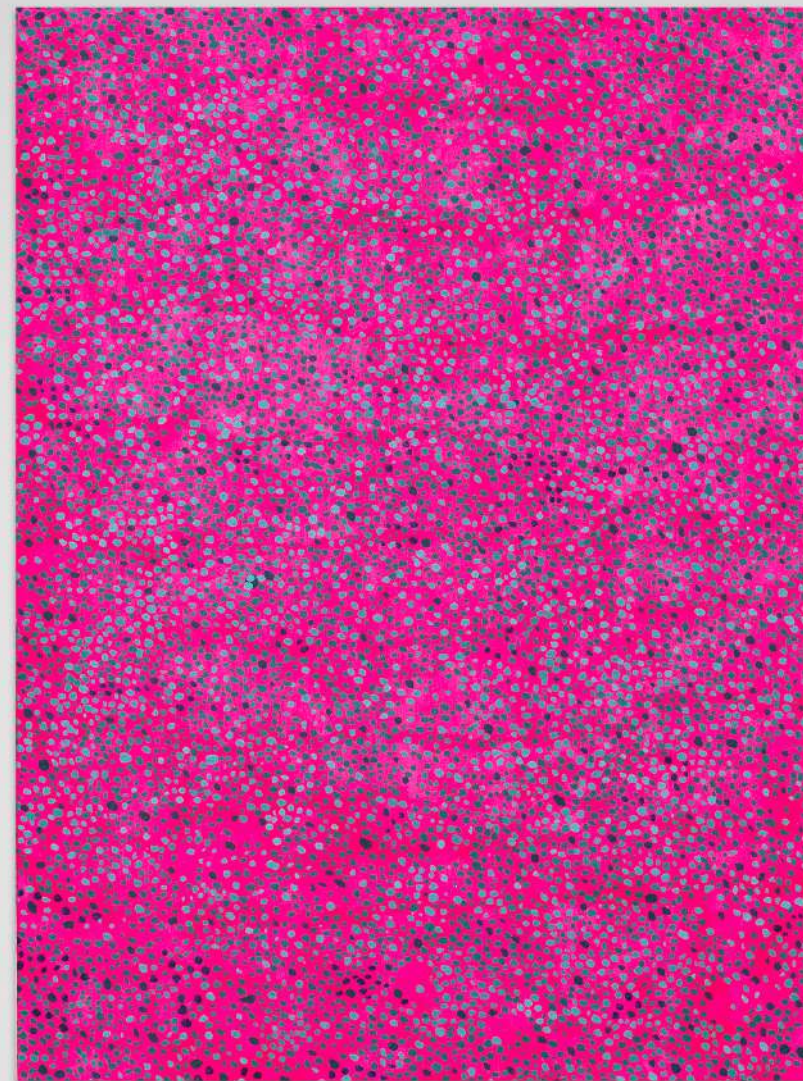
Acrylic on paper

Unframed: 42 x 30 cm

Framed: 52 x 42 cm

£385.00

[Press to buy / enquire](#)





CARDBOARD GRAPHICS SERIES

In his most recent body of work, Gleb Skubachevsky repurposes Amazon cardboard boxes, originally used to deliver his paints, transforming them into canvases for experimental, textured graphics. Inspired by Yoshitomo Nara's fast and intuitive approach to working on cardboard, Gleb adopts a similarly spontaneous, bold vision while embracing upcycling. Skubachevsky describes this series as eco-object-art, transcending conventional mediums.

Cardboard experiments, 3, 2025

Acrylic on cardboard

Unframed: 30 x 21 cm

Framed: 40 x 30 cm

£385.00

[Press to buy / enquire](#)



Cardboard experiments, 4, 2025

Acrylic on cardboard

Unframed: 30 x 21 cm

Framed: 40 x 30 cm

£385.00

[Press to buy / enquire](#)



MILADO
Art Gallery



Cardboard experiments, 1, 2025

Acrylic on cardboard

Unframed: 30 x 21 cm

Framed: 40 x 30 cm

£385.00

[Press to buy / enquire](#)



Cardboard experiments, 2, 2025

Acrylic on cardboard

Unframed: 30 x 21 cm

Framed: 40 x 30 cm

£385.00

[Press to buy / enquire](#)



MILADO

Art Gallery

About

Body of Work

Contacts

Gleb Skubachevsky Presentation

2025 - 2026

WEBSITE

miladoartgallery.com

PHONE

[+44 789 474 0505](tel:+447894740505)

EMAIL

milla@miladoartgallery.com

INSTAGRAM

[@miladoartgallery](https://www.instagram.com/miladoartgallery)

FACEBOOK

[MILADO Art Gallery](https://www.facebook.com/MILADO-Art-Gallery)

ARTSY

[MILADO Art Gallery at artsy.net](https://www.artsy.net/milado-art-gallery)

